

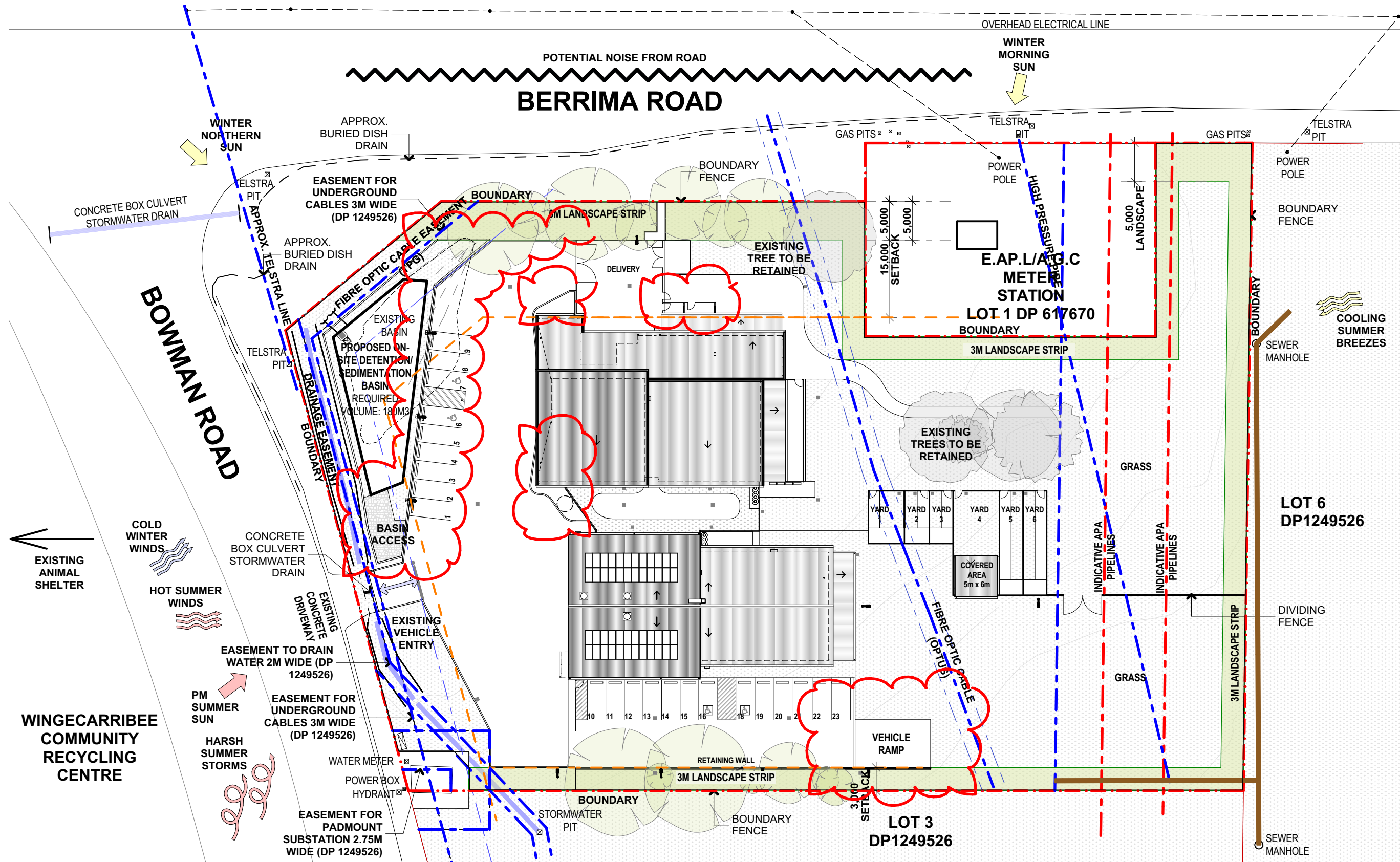
MOSS VALE ANIMAL SHELTER AND SES BUILDING

ISSUED FOR S.455 MODIFICATION

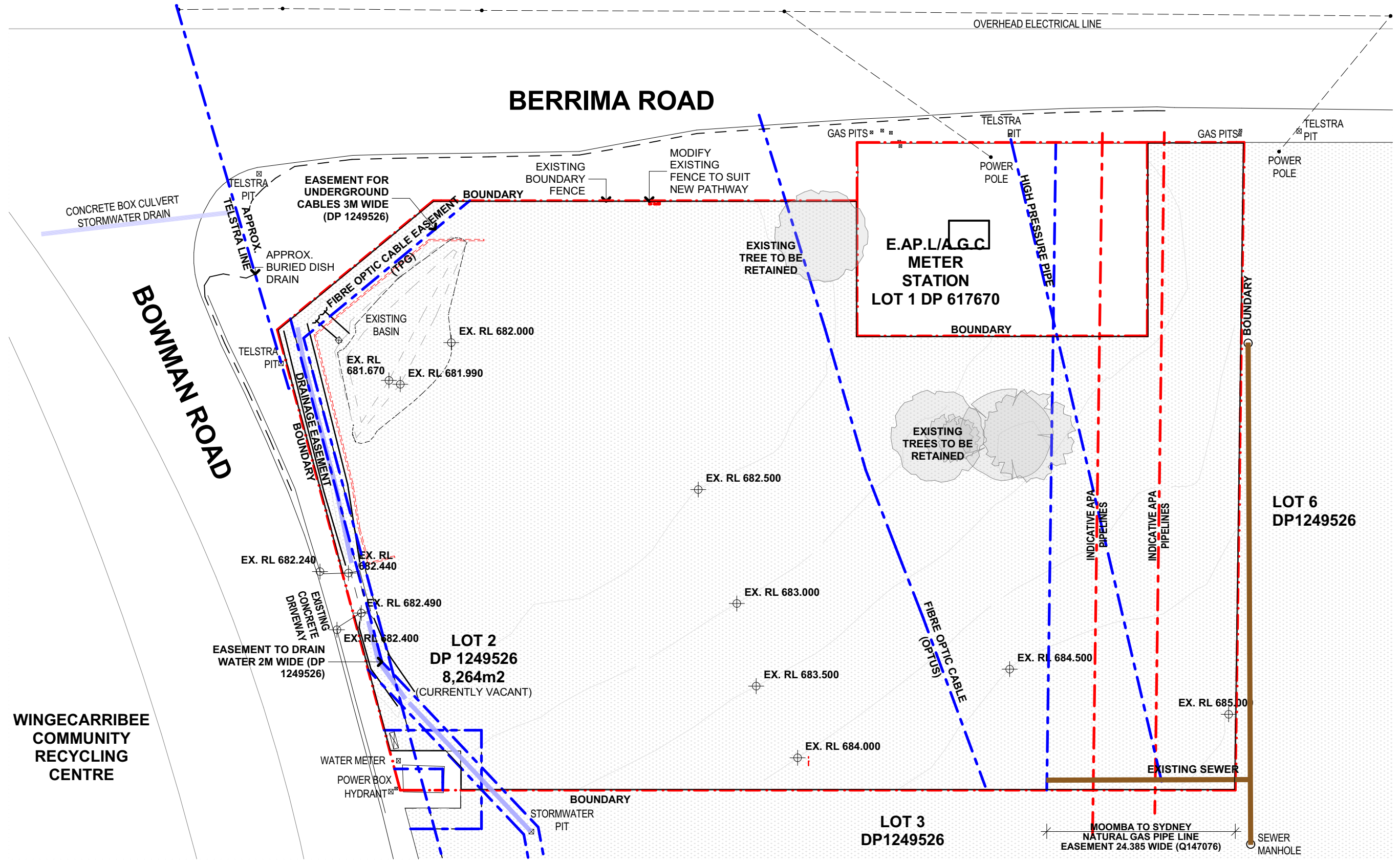
LOT 2 DP124956, 1 BOWMAN ROAD, MOSS VALE NSW 2577

REV	DATE	DESCRIPTION
A	13/05/22	FOR DA SUBMISSION
B	30/03/23	ISSUE FOR S.455
C	28/05/23	AMENDED S.455 - RESPONSE TO RFI

DRAWING NO.	DRAWING NAME	SCALE
000	COVER PAGE	1:500
110	GROUND FLOOR PLAN	1:200
111	ROOF PLAN	1:200
200	ELEVATIONS & SECTIONS 1	1:100
201	ELEVATIONS & SECTIONS 2	1:100
440	MATERIAL AND FINISHES SCHEDULE	1:100



2 SITE PLAN
A1@1:500



1 EXISTING & DEMOLITION PLAN
A1@1:500



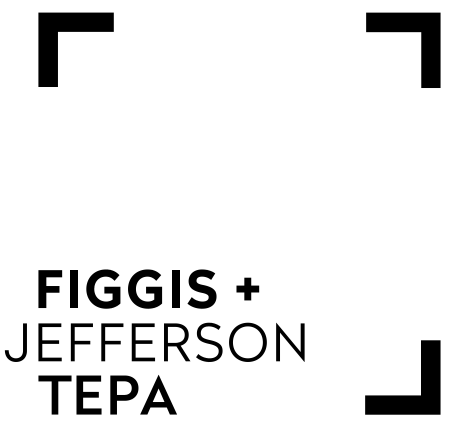
3 ARTIST IMPRESSION



4 ARTIST IMPRESSION



5 ARTIST IMPRESSION



FIGGIS + JEFFERSON TEPA PTY LTD
220 Willoughby Road, Crows Nest, NSW 2065 Australia
E studio@figgis.com.au T 02 9438 5555
W www.figgis.com.au

Nominated Architect:
Stephen Figgis NSW ARB No. 3565

This drawing is protected under the Copyright Act 1968 and is the copyright of Figgis and Jefferson TEPA. Do not reproduce, modify or transmit this drawing without the permission of Figgis and Jefferson TEPA. Do not scale this drawing. Use figured dimensions only. Confirm all dimensions and levels on site prior to commencement of any work, preparation of shop drawings or fabrication of components.

PROJECT
ANIMAL SHELTER AND SES BUILDING
FOR
WINGECARRIBEE SHIRE COUNCIL
AT
LOT 2 DP 1249526
1 BOWMAN ROAD, MOSS VALE NSW 2577

DRAWING TITLE
COVER PAGE, DEMOLITION & SITE PLANS
ARCHITECT
JC

DRAWING NO.
3791 DA 000
SCALE
0m 5 10 15 20 25
ISSUE
C

BERRIMA ROAD

REV	DATE	DESCRIPTION
A	13/05/22	FOR DA SUBMISSION
B	30/03/23	ISSUE FOR S.455
C	26/05/23	AMENDED S.455 - RESPONSE TO RFI

LOT 6
DP1249526

**FIGGIS +
JEFFERSON
TEPA**

FIGGIS + JEFFERSON TEPA PTY LTD
220 Willoughby Road, Crows Nest, NSW 2065 Australia

E studio@figgis.com.au T 02 9438 5555
W www.figgis.com.au

Nominated Architect:
Stephen Figgis NSW ARB No. 3565

This drawing is protected under the Copyright Act 1968 and is the copyright of Figgis and Jefferson TEPA. Do not reproduce, modify or transmit this drawing without the permission of Figgis and Jefferson TEPA. Do not scale this drawing. Use figured dimensions only. Confirm all dimensions and levels on site prior to commencement of any work, preparation of shop drawings or fabrication of components.

PROJECT
ANIMAL SHELTER AND SES BUILDING

FOR
WINGECARRIBEE SHIRE COUNCIL

AT
LOT 2 DP 1249526
1 BOWMAN ROAD, MOSS VALE NSW 2577

DRAWING TITLE
ROOF PLAN

ARCHITECT
JC

DRAWN

DRAWING NO.	ISSUE
3791 DA 111	C

SCALE 0m 2 4 6 8 10

$$\frac{1}{-}$$

ROOF PLAN
A1@1:200

LOT 3
DP1249526

MOOMBA TO SYDNEY
NATURAL GAS PIPE LINE
EASEMENT

HIGH PRESSURE PIPE

**E.AP.L/A.G.C
METER
STATION
LOT 1 DP 617670**

BOUNDARY

5,000
TRACK

INDICATIVE APA
PIPELINES

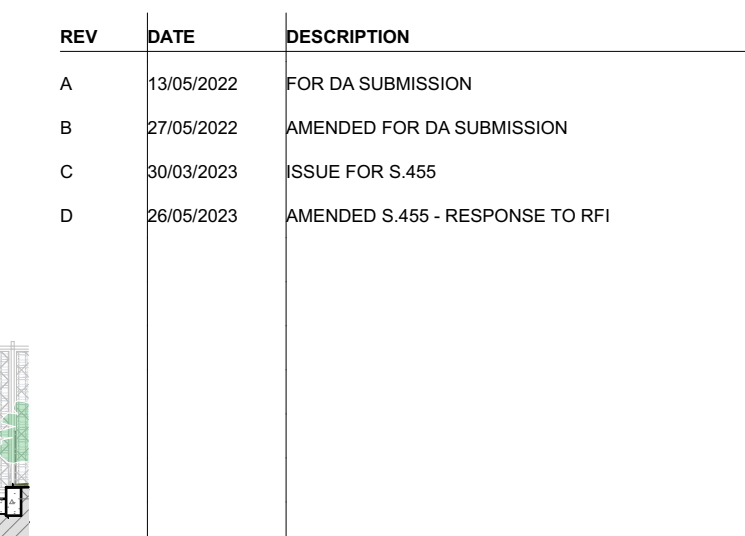
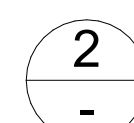
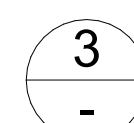
INDICATIVE APA PIPELINES

FIBRE OPTIC CABLE
(OPTUS)

1.500

and

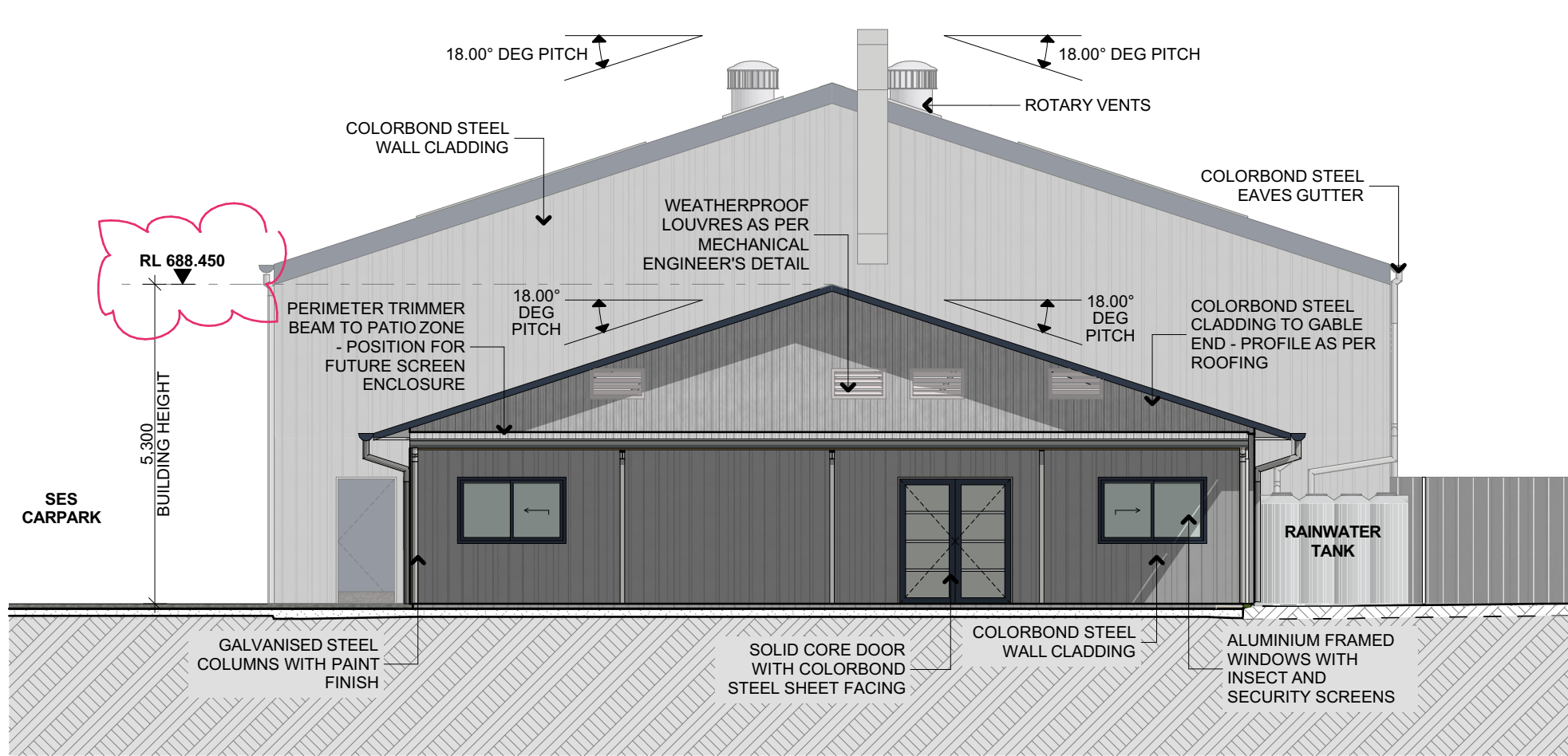
1.50

 $\frac{1}{-}$ 
$$\frac{2}{-}$$

$$\frac{3}{-}$$


7

DRAWING NO. 3791 DA 200 **ISSUE** D

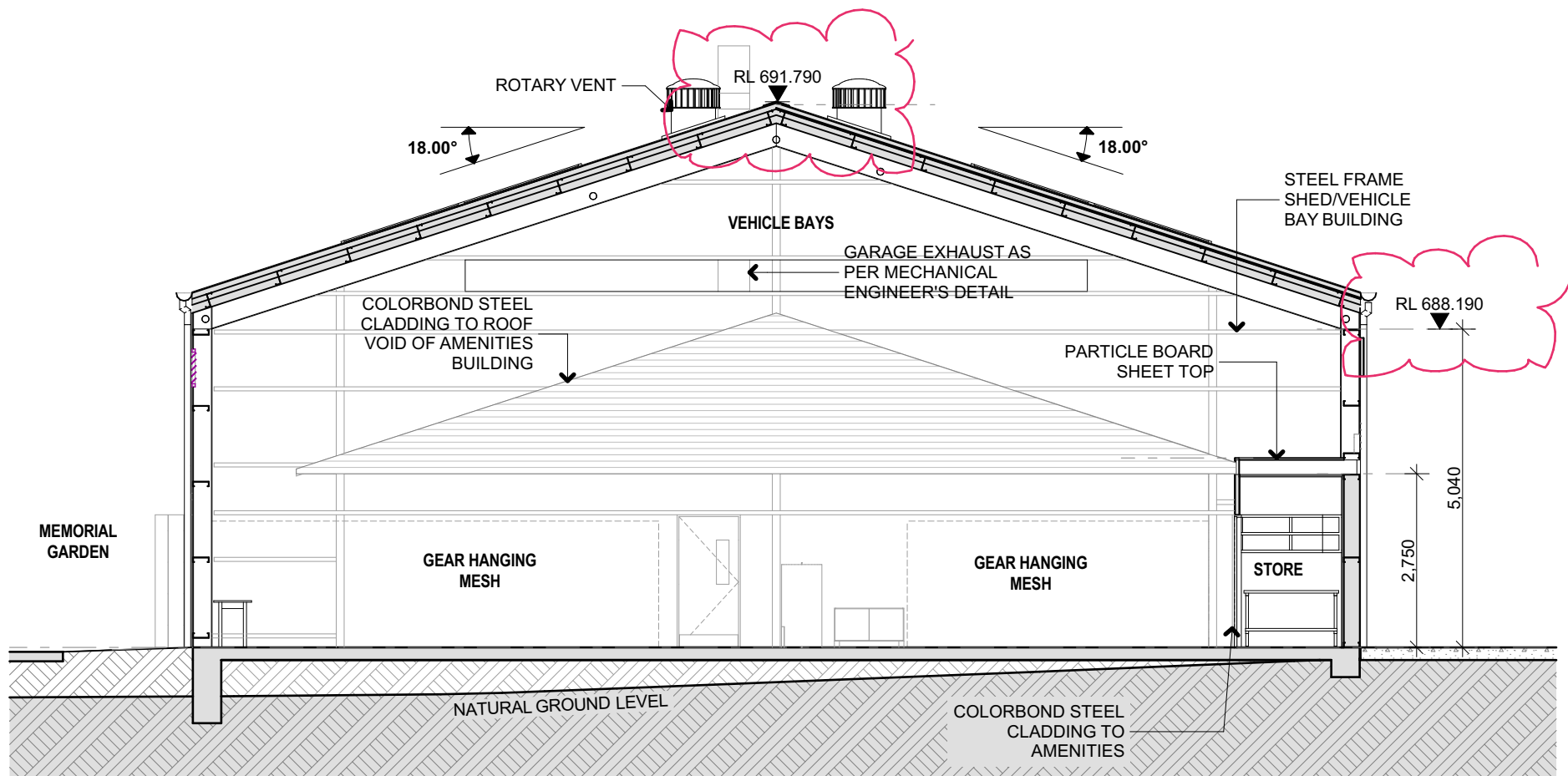
SCALE 0m 1 2 3 4



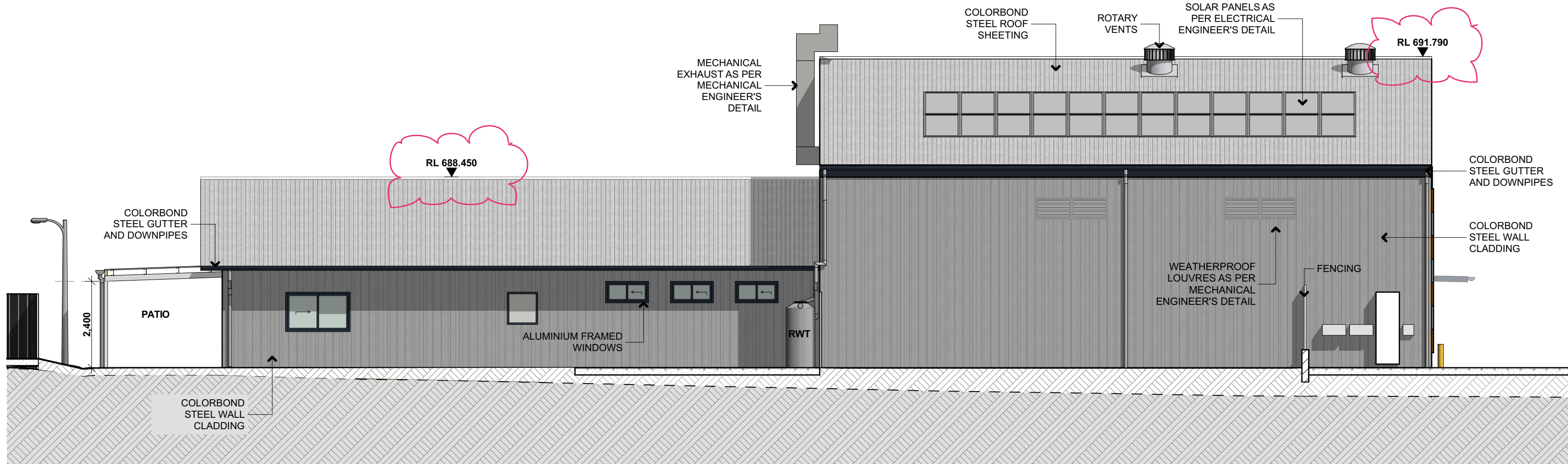
1 SES SOUTH EAST ELEVATION
A1@1:100



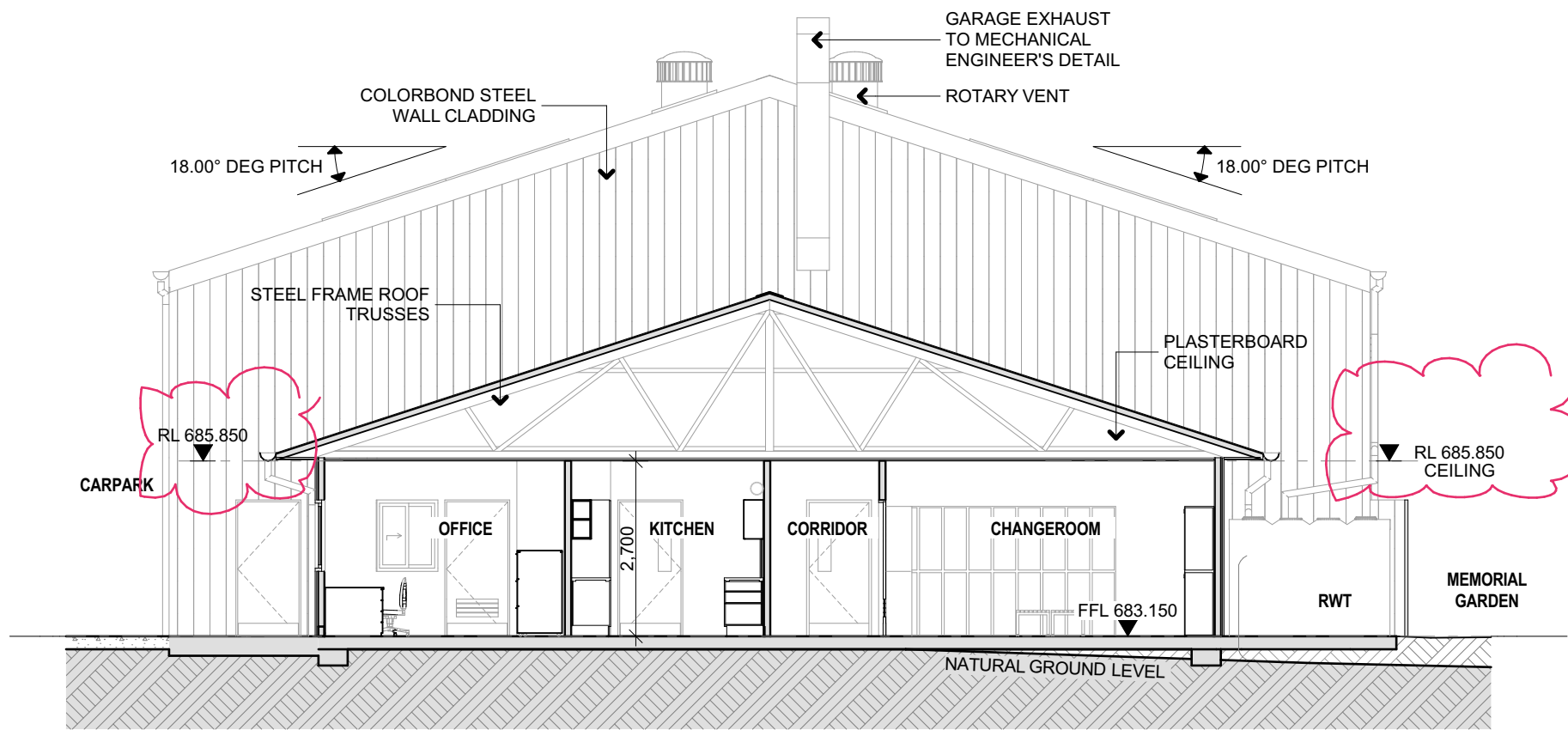
2 SES SOUTH WEST ELEVATION
A1@1:100



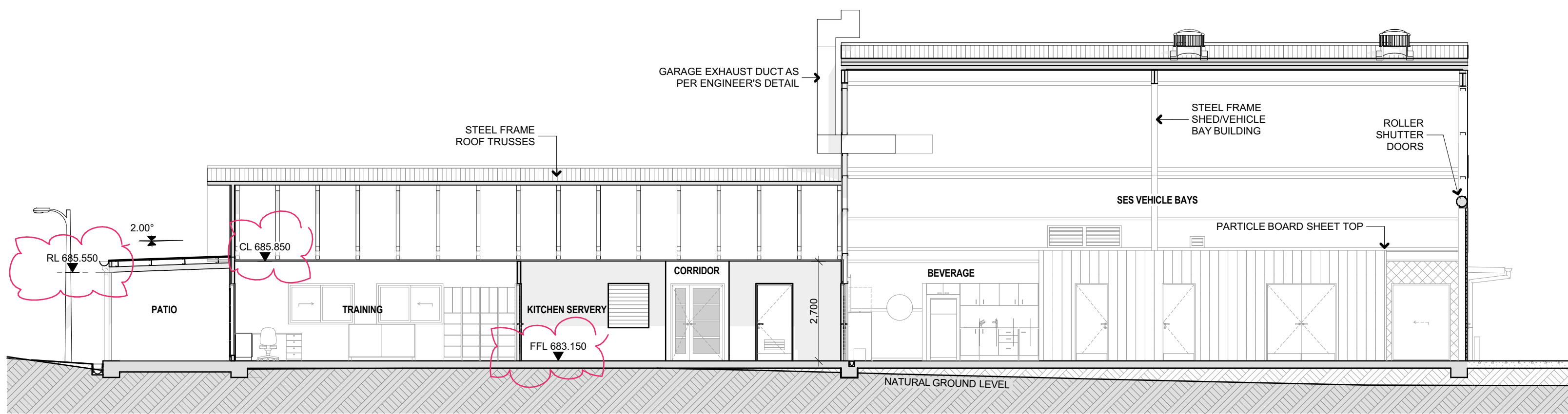
4 GARAGE SECTION
A1@1:100



3 SES NORTH EAST ELEVATION
A1@1:100



5 SECTION
A1@1:100



6 SES LONG SECTION
A1@1:100

REV	DATE	DESCRIPTION
A	13/05/2022	FOR DA SUBMISSION
B	27/05/2022	AMENDED FOR DA SUBMISSION
C	30/03/2023	ISSUE FOR S.455
D	26/05/2023	AMENDED S.455 - RESPONSE TO RFI

FIGGIS +
JEFFERSON
TEPA

FIGGIS + JEFFERSON TEPARTY LTD
220 Willoughby Road, Crows Nest, NSW 2065 Australia

E studio@figgis.com.au T 02 9438 5555
W www.figgis.com.au

Nominated Architect:
Stephen Figgis NSW ARB No. 3545

This drawing is protected under the Copyright Act 1968 and is the copyright of Figgis and Jefferson TEPA. Do not reproduce, modify or transmit this drawing without the permission of Figgis and Jefferson TEPA. Do not scale this drawing. Use figured dimensions only. Confirm all dimensions and levels on site prior to commencement of any work, preparation of shop drawings or fabrication of components.

PROJECT
ANIMAL SHELTER AND SES BUILDING

FOR
WINGECARRIBEE SHIRE COUNCIL

AT
LOT 2 DP 1249526
1 BOWMAN ROAD, MOSS VALE NSW 2577

DRAWING TITLE
ELEVATIONS & SECTIONS 2

ARCHITECT
JC

DRAWN
RC

DRAWING NO. ISSUE

3791 DA 201 D

SCALE 0m 1 2 3 4 5



1
-
ANIMAL SHELTER & SES NORTH WEST ELEVATION
A1@1:100

WALL CLADDING
PROPRIETARY TIMBER WALL CLADDING
AND FENCING

FINISH
SIMILAR TO BLACKBUTT

WALL CLADDING
PROPRIETARY STEEL WALL CLADDING

FINISH
SIMILAR TO COLORBOND MONUMENT

SES IDENTIFIER FEATURE
FIXED PANELS

FINISH
SIMILAR TO "SES ORANGE"

WALL CLADDING - PROFILE A
PROPRIETARY STEEL WALL CLADDING

FINISH
SIMILAR TO COLORBOND SHALE GREY

SES BUILDING
GUTTERS AND FASCIAS
PROPRIETARY STEEL PRODUCTS

FINISH
SIMILAR TO COLORBOND DEEP OCEAN

WINDOW FRAMES
PROPRIETARY WINDOW SUITE

FINISH
SIMILAR TO DULUX COLORBOND
MONUMENT

WALL CLADDING
PROPRIETARY BRICKWORK

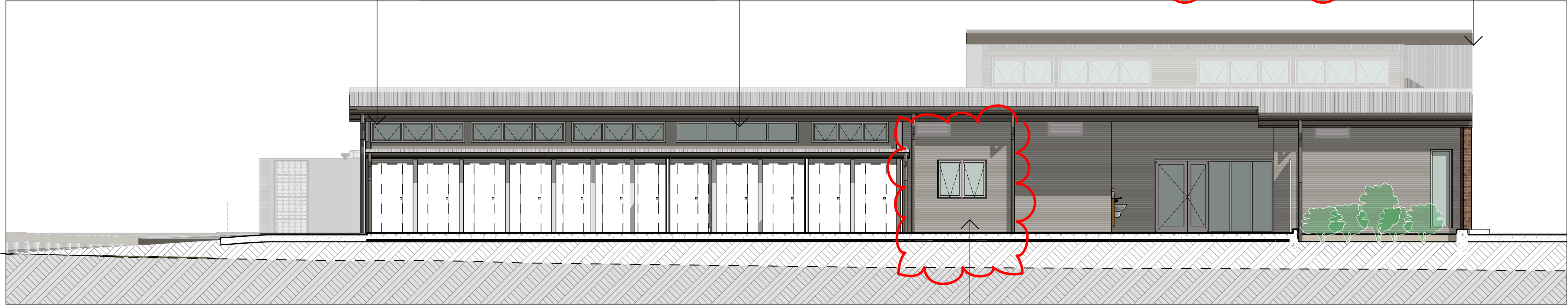
FINISH
SIMILAR TO BOWRAL HIGHLAND
WOODLANDS

ROOF SHEETING
PROPRIETARY METAL ROOF SHEETING

FINISH
SIMILAR TO COLORBOND SHALE GREY

SES BUILDING
EXTERNAL DOORS & ROLLER SHUTTERS

FINISH
SIMILAR TO COLORBOND DEEP OCEAN



2
-
ANIMAL SHELTER NORTH EAST ELEVATION
A1@1:100

SES IDENTIFIER FEATURE
FIXED PANELS

FINISH
SIMILAR TO "SES ORANGE"

WALL CLADDING - PROFILE A
PROPRIETARY STEEL WALL CLADDING

FINISH
SIMILAR TO COLORBOND SHALE GREY

WALL CLADDING
PROPRIETARY STEEL WALL CLADDING

FINISH
SIMILAR TO DULUX COLORBOND DUNE

WINDOW FRAMES
PROPRIETARY WINDOW SUITE

FRAME FINISH
SIMILAR TO COLORBOND DEEP OCEAN

ROOF SHEETING
PROPRIETARY METAL ROOF SHEETING

FINISH
SIMILAR TO COLORBOND SHALE GREY

WALL CLADDING - PROFILE B
PROPRIETARY STEEL WALL CLADDING

FINISH
SIMILAR TO COLORBOND SHALE GREY

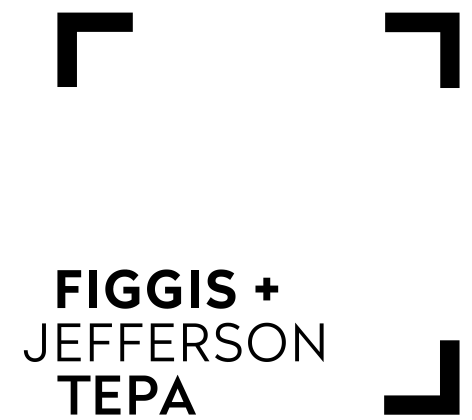
DOWNPIPES
PROPRIETARY STEEL PRODUCTS

FINISH
SIMILAR TO COLORBOND SHALE GREY



3
-
SES SOUTH WEST ELEVATION
A1@1:100

REV	DATE	DESCRIPTION
A	13/05/2022	FOR DA SUBMISSION
B	30/03/2023	ISSUE FOR S.455
C	28/05/2023	AMENDED S.455 - RESPONSE TO RFI



FIGGIS + JEFFERSON TEPA
220 Willoughby Road, Crows Nest, NSW 2065 Australia
E studio@fggis.com.au T 02 9438 5555
W www.fggis.com.au
Nominated Architect:
Stephen Figgis NSW ARB No. 3545

This drawing is protected under the Copyright Act 1968 and is the copyright of Figgis and Jefferson TEPA. Do not reproduce, modify or transmit this drawing without the permission of Figgis and Jefferson TEPA. Do not scale this drawing. Use figured dimensions only. Confirm all dimensions and levels on site prior to commencement of any work, preparation of shop drawings or fabrication of components.

PROJECT
ANIMAL SHELTER AND SES BUILDING

FOR
WINGECARRIBEE SHIRE COUNCIL

AT
LOT 2 DP 1249526
1 BOWMAN ROAD, MOSS VALE NSW 2577

DRAWING TITLE
MATERIAL AND FINISHES SCHEDULE

ARCHITECT
JC

DRAWN
RC

DRAWING NO.
3791 DA 440

ISSUE
C

SCALE
0m